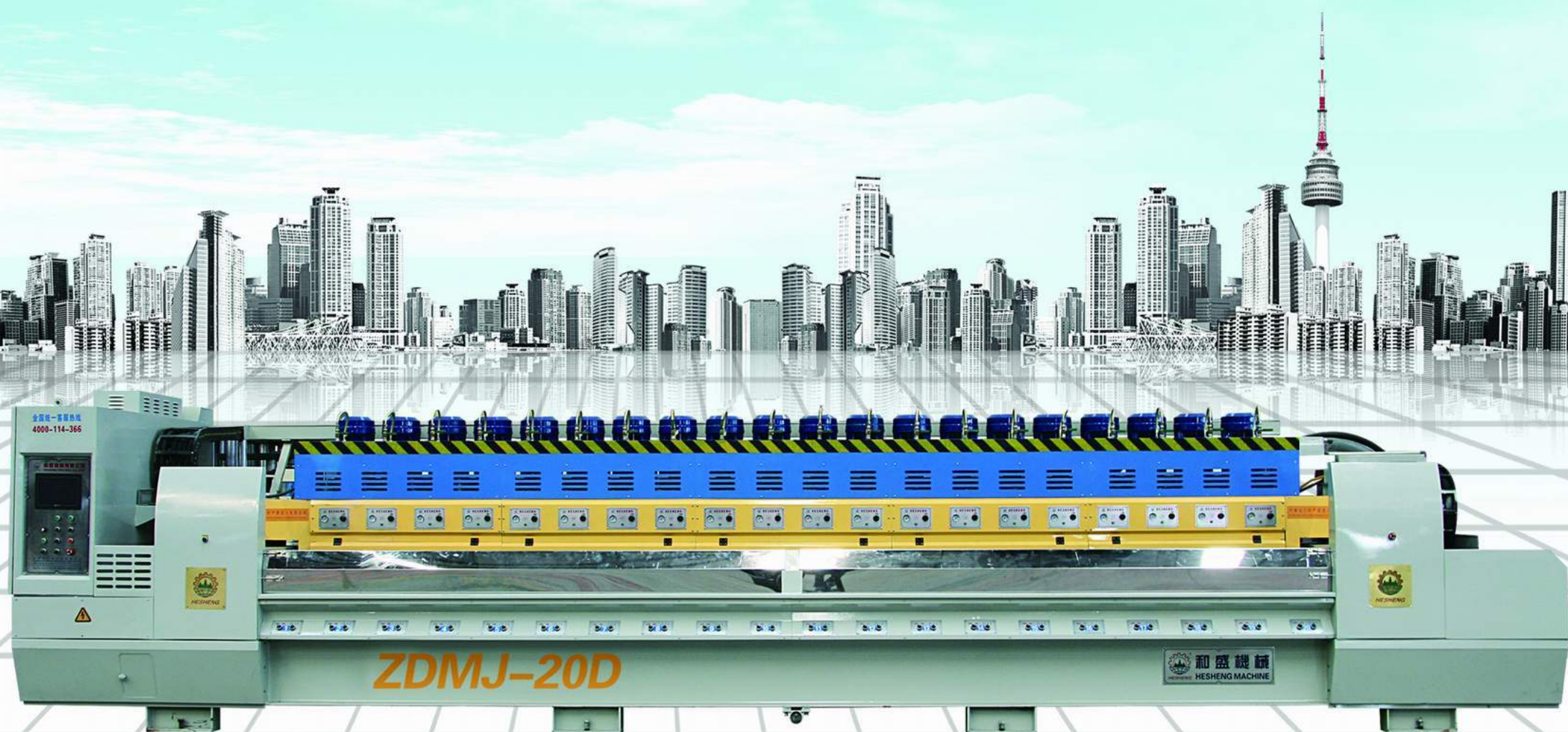


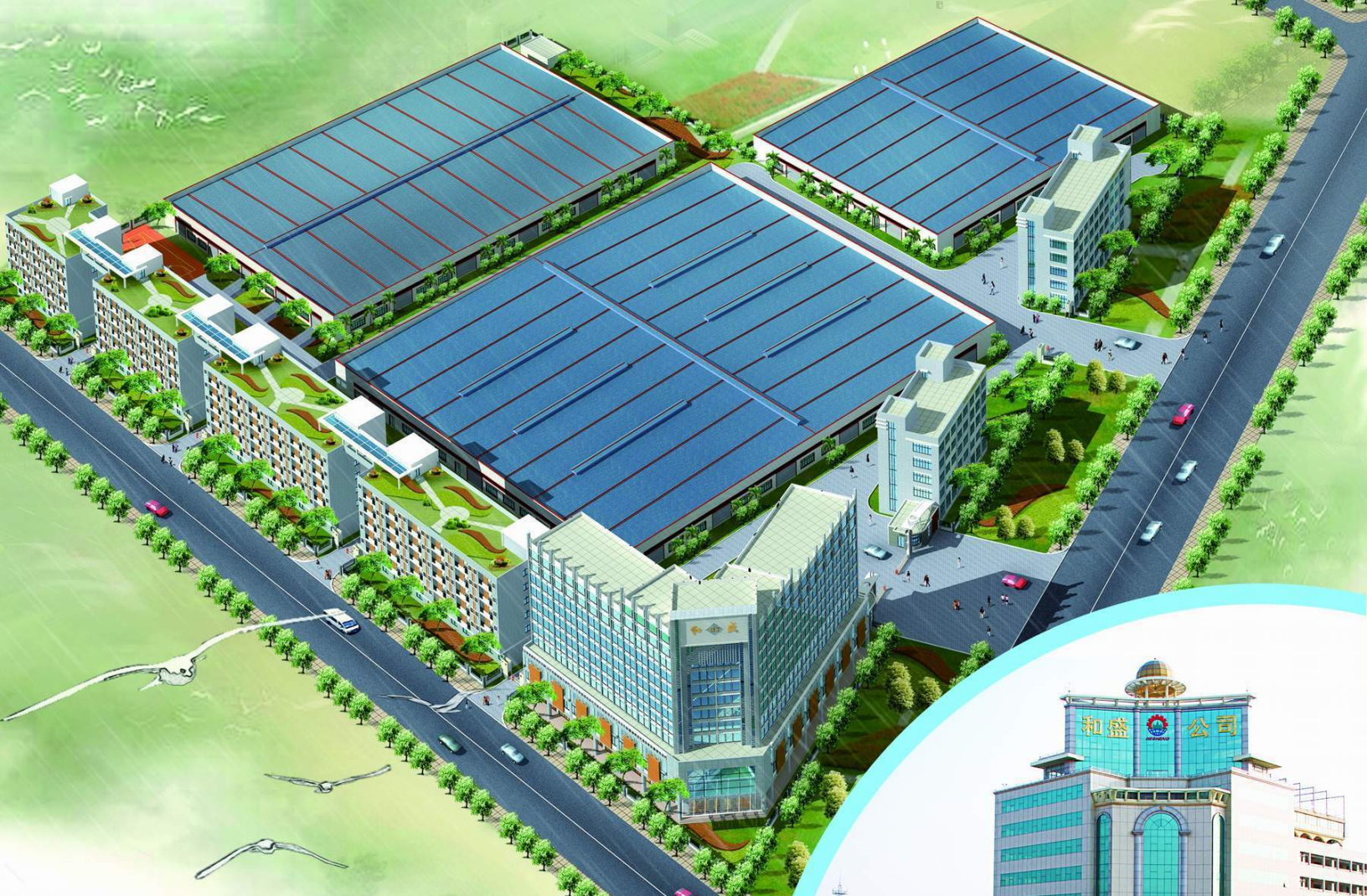


**HESHENG  
MACHINE**

# ZDMJ- $\frac{1050}{1250}$ 8/12/14/16/20/24D Automatic Polishing Machine For Granite







# > Hesheng Machine

ZDMJ- $\frac{1050}{1250}$  8/12/14/16/20/24D  
Automatic Polishing Machine For Granite



Side View 1



Side View 2



Night illumination



Finished Machinery Packing



T12 T16 Rear View



T20 T24 Rear View

## brief Introduction

*we are not simply direct stone machine manufacturer,  
while aiming at totally customer satisfaction.*

- **History:** Since 1983 .
- **Staff:** Owning more than 200 well educated and experienced technician & engineer ,including advanced R&D department . professional team of after sale service,making itself a leading stone machine manufacturer.
- **Workshop:** Foundry Plant. Workpiece Processing & Assembling Factory .
- **Honor and Certification:** ISO9001:2000 . Provincial "High-Tech Enterprise" "Outstanding Enterprise of Technical Renovation"...
- **Products:** Automatical Bridge Saw. High Efficiency Multidisc Block Cutter. Gantry Block Cutter. Manual Edge Cutting Machine. Special Shape Processing Machine for Countertop .Column... Collection of Polishing Machine and other customize equipment for processing slab and block material .
- **Market:** We have exported our machines to Russia. Australia. Vietnam. America. Canada. Mexico. Spain. Bulgaria. Greece and many other countries and districts.
- **Customize:** We can also customize the machinery according to the your requirement. For more details on pricing and other requirements.Pls.contact us.
- **Quanzhou Mingsheng Machinery Factory** is a new Subsidiary of Jinjiang Hesheng machine co.,ltd. At present, it covers a productive land of 110 acres at Hailian Pioneer Park in Shuitou Town and is oriented with producing Large-pattern Stone Material Machining Equipment





**Polishing Head**

Adopt the adjustable lifting stroke polishing head ,which can reduce the recoil resistance of polishing head and adjust the up and down limit position of polishing head suitable for different hardness slabs.The advantages of this improvement :

1. polishing the more thinner slab.
- 2.extend service life of the belt
3. increasing the polishing production.
4. reducing the abrasive consumption etc.



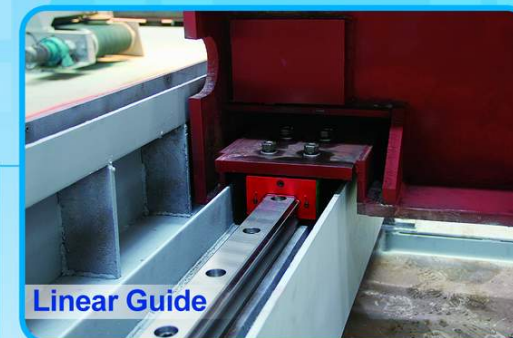
**Main Motor**

Main motor is made according the old standard for powerful drive. Aluminum casing could lower total weight of crossbeam, and be featured as light and quick during swing which is helpful to increase yield



**Pneumatic Valve**

Pneumatic components (including cylinder, air valve and regulating switch) adopt Taiwan "AirTAC" products with stable quality and lower fault rate



**Linear Guide**

The linear guide (imported from Taiwan) is adopted as for side beam traveling, so the crossbeam is stable without vibration and jacking-up during traveling.



**NEW**

## ZDMJ-<sup>1050</sup>/<sub>1250</sub> 8/12/14/16/20/24D

### Automatic Polishing Machine For Granite

- 1: The control system of combination with the domestic market demands, this machine adopts the design scheme of the foreign party and automatic system, which is featured as reliable performance, high yield and lower maintenance.
- 2: The machine is made by standard castings and steel, branded electrical equipment made in German, Japan and Taiwan, as well as branded bearing, motor and gear reducer.
- 3: The control system of this machine adopts PLC terminal control with LCD touch screen terminal as HMI for parameter setting and fault prompts during operation, etc. It is applicable to continuous grinding and polishing granite tile. Operating speeds of plate conveying and crossbeam of polishing disc are controlled by frequency converter; working pressure and the polishing width of tile are adjustable within the setting values. This machine can also automatically identify the shape of tile, so that each polishing disc (polishing head) could automatically lift and lower according to the identified shape of tile, and conduct tracking records for tile polishing at the same time. The overall machine is produced according the standard requirements with performance up to the leading domestic level.

### Product Material:

Name	Unit	ZDMJ-8D	ZDMJ-12D	ZDMJ-14D	ZDMJ-16D	ZDMJ-20D	ZDMJ-24D
The number of grinding	mm	8	12	14	16	20	24
Thickness of the effective work	mm	15-50	15-50	15-50	15-50	15-50	15-50
Effective working width	mm	1(Add width 1.25/1.4/1.5/2M)	1(Add width 1.25/1.4/1.5/2M)	1(Add width 1.25/1.4/1.5/2M)	1(Add width 1.25/1.4/1.5/2M)	1(Add width 1.25/1.4/1.5/2M)	1(Add width 1.25/1.4/1.5/2M)
Belt feed rate	m/min	0.8-3.5	0.8-3.5	0.8-3.5	0.8-3.5	0.8-3.5	0.8-3.5
Grinding motor power	kw	7.5	7.5	7.5	7.5	7.5	7.5
Total power	kw	65	95	115	125	155	190
Water consumption	m <sup>3</sup> /h	8	12	14	16	20	25
Dimensions	m	5.1x1.9x2.2	6.4x1.9x2.2	7.1x1.9x2.2	7.8x1.9x2.2	9.3x1.9x2.2	10.8x1.9x2.2

Due to the renovation,all appearance and specification of this print shall subjected to the final machine products.

**The Inner Connect Surface Of The Polishing Head**

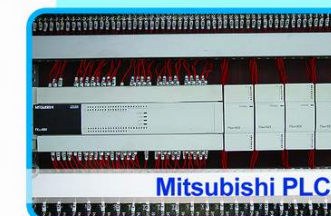


The inner connect surface of the up/down polishing head uses the oil-free self-lubricating bearing sleeve,which can reduce the wear gap of polishing head, effectively decrease the polishing scratches of slab, and improve the using life of the polishing head greatly.(Alternative)



**Electric Cabinet**

Computer (micro-processor) is selected the imported Mitsubishi products from Japan with the best stability and lowest failure rate among the same products. The frequency converter adopts product made by Schneider and Toshiba which is a manufacturer specialized in frequency converter recognized all over world. Relay is from Siemens and Air Switch and Contactor are all from LG.



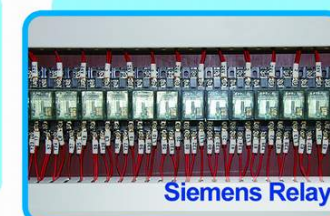
**Mitsubishi PLC**



**LG Air Switch**



**Schneider**



**Siemens Relay**

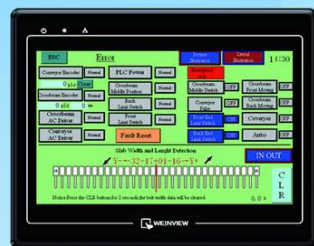




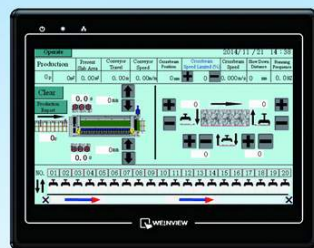
Display Screen



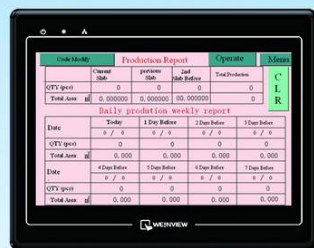
Home Screen



Mechanical Fault Diagnosis



Setting Screen For Polishing Head



Production Statistics Screen

>The touch screen adopts Taiwan WEINVIEW electrical equipment and button adopts products from Siemens (Jiangsu)



Worktable Reducer

Gear reducer is connected with idler wheel by chain so as to reduce possibility of shaft broken



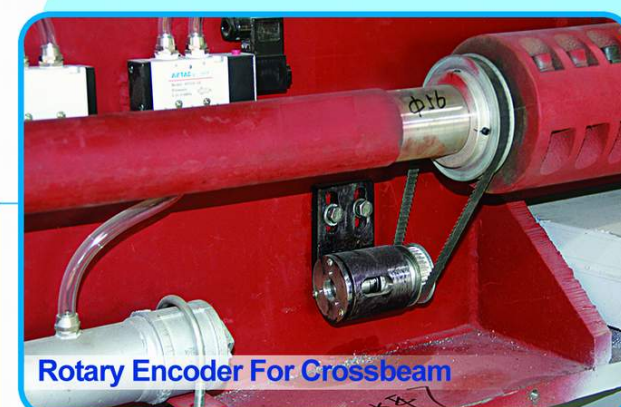
Inductor For Slab Feeding

Inductor for tile feeding could regulate according the different thickness of tile



Rotary Encoder For Worktable

The seat of rotary encoder of worktable adopts all-sealed structure for dustproof and waterproof, which could lower failure rate



Rotary Encoder For Crossbeam

The rotary encoder for side beam traveling adopts synchronous belt drive with features of stable signal and convenient maintenance, etc.



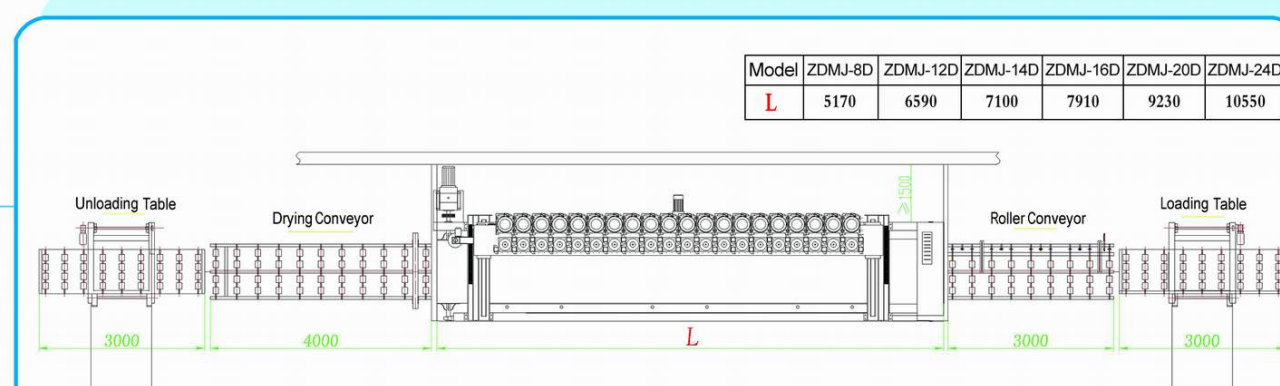
Hesheng Workshop



Roller Conveyor



Loading/Unloading Table



External Dimension





## FUJIAN JINJIANG HESHENG MACHINE CO.,LTD

ADD: NO.6 Wushan Industrial Zone, Anhai, Jinjiang City, Fujian Province, China

NEW PRODUCTION BASE: FUJIAN QUANZHOU MINGSHENG MACHINE CO.,LTD

ADD: Hailian Pioneer Park, Shuitou, Nanan City, Fujian Province, China

TEL: (0086)0595-85787366 85707366 FAX: (0086)0595-85799366

SERVICE HOTLINE: 4000-114-366

Http://www.chinahesheng.com www.stonemachinery.net

E-mail: hesheng@china-hesheng.com info@china-hesheng.com